

HD multi-functional law enforcement recorder user's manual

Product safety instructions



In order not to damage to the law enforcement recorder (hereinafter referred to as the "machine"), to let you or any other person avoid accidental injury, please read and keep in mind the following safety instructions before using this product, and put the safety manual on a convenient location for you or other users.

Do not disassemble the machine;

Do not use power adapter at where there is flammable gas;

Place the product where children can not reach;

Please note the following matters when using the battery charger, failure to comply with this precaution could result in a fire or electric shock;

- Allows only the battery charger attached to the machine or original factory battery charger to charge the battery, and use of other types of charger may lead to battery leakage, overheating or explosion;
- Keep the machine dry, the metal part near the plug and dust around should be wiped clean with dry cloth;
- Thunderstorm days do not use a power cord or stay near the battery charger. Failure to observe this precaution may cause an electric shock;
- Do not damage, modify, forcibly tug, do not place heavy object on it, keep it from heat and fire;
- Do not touch plug or battery charger with wet hands;

Matters on using battery

- Allows the battery attached to the machine or original factory sale battery;
- Before replacing the battery, turn off the power of the machine. if you are using the AC adapter, be sure to pull it out;
- Do not place the battery upside down or back to front.
- Do not make the battery short circuit or disassemble the battery or attempt to remove or break the battery insulation layer or casing;
- Avoid immersing the machine or battery in water as soon as possible;
- When carrying the battery in the machine, do not carry or put away with metal objects(such as necklaces, hairpins, etc);
- Once you find the battery abnormalities (such as discoloration or deformation), please stop using it immediately.

When you find the machine or the AC power adapter smoking or occurrence of odor, immediately turn off the power and pull out the AC power adapter and remove out the battery. Be careful to avoid burns!

Do not use the machine in this case! Send it to our company or its authorized service points to overhaul the machine or accessories.

If the screen is damaged, avoid contact with the liquid crystal, Please take the following emergency measures if any of the following situations occurs :

- If liquid crystal comes in contact with the skin, clean the area with a cloth, then apply soap and rinse thoroughly with water;
- If liquid crystal enters your eyes, flush eyes with water for at least 15 minutes, then seek the help of medical staff;
- If user swallows liquid crystal, gargle thoroughly with water, drink plenty of water to induce vomiting, then seek the help of medical staff.

Product brief introduction

The recorder is the latest multi-functional, all-weather evidence recording product. The product can restore law enforcement scene in a fair and objective way, and to protect the legitimate rights and interests of the law enforcement officers, and reduce the costs of investigation and evidence collection, standardize law enforcement requirements, improve the quality of law enforcement. This product can bring an important practical significance for improving law enforcement management mechanism and the image of public law enforcement. This product has a stable performance, good quality, small size, human body engineering design. Easy to operate, convenient to carry. It is widely used in the field of public security, armed police, urban management and other administrative law enforcement, also used in inspection, industry and commerce, taxation, customs, maritime, health, environmental protection etc.

Product Features introduction

- 1 Use ZORAN latest dual-core DSP chip, Linux operating system, high definition and low illuminance industrial CMOS image sensor, 130 wide angle camera, outstanding image and visual effect, brilliant and real color.
- 2 Real Full HD 1080P 30 frames / second camera, H.264 encoding, 720P camera resolution, up to 60 frames / sec;
- 3 Photo 12M pixels, JPG format;
- 4 High sensitivity, high signal-to-noise ratio alone recording function;
- 5 Automatic IR filter switching, night-vision shooting;
- 6 Fully meet the special needs, IP54 protection level design, no body or data damage when falling freely;
- 7 Synchronization of audio and video, seamless recording (including capture, segmented videos, loop recording);
- 8 Wireless remote control function: taking video, taking pictures, recording and connected to a TV or projector to realize browsing capabilities;
- 9 GPS track record, latitude and longitude data superimposed on video file, when playing video file, speed and location of the video taking moment will be shown;
- 10 Built-in parameters setting program(set the time / police NO./ resolution / compression ratio / device ID number, etc.);
- 11 Operation dairy logging function;
- 12 File browsing and playback functions;
- 13 Equipped with a special clip;
- 14 Laser positioning indication function;
- 15 Intercom shoulder microphone function;
- 16 Automatically take photo and video files and upload to law enforcement recorder data management system;
- 17 Backstage classification management system for picture and video file storage, classification management function for confidentiality and inquiry.

Parts schematic diagram

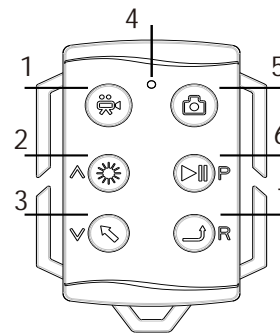
host part:



- (1)Up (2)Play/Pause/play back (3)Stop/Audio (4)Down (5)Loudspeaker
(6)Display Screen (7)PTT Button (8)AV IN /PTT Port (9)Voice recording
(10)Infrared Inductor Inside (11) LED lamp (12)IR LED (13)MIC
(14)LED Light For Work State (15)Laser positioning (16)Camera Lens
(17)Video Recording (18)Photo (19)Power on/off
(20)USB Slot(USB 2.0 Transfer/DC-in) (21)HDMI Interface (22)Reset

Remote control parts:

- (1) Video Recording
(2) LED switch/UP/playback voice +
(3) Laster switch/Down/playback voice -
(4) Indicator light(press it and blue led turns on.
(5) Photo taking
(6) Playback/Pause/Confirm
(7) Return



Operation instruction

Note:

Before use, make sure that law enforcement recorder battery is fully charged;
Please read law enforcement recorder key function definition, make your operation more convenient.

Basic operations

- Power on long press the power button for about one second,enter the standby state.

- power off long press the power button for about one second, turn off the machine.
- Standby picture After the machine is turned on, and no operation for a long time, the machine will automatically enter standby screen, the screen continues to appear "standby" and machine battery power state indicator. In this work state, short press the power button to enter standby state.
- Video recording click the video recording button to start, the upper left corner of the screen displays flashing red ● logo, once again short press the video recording key or the power on key to save the currently recorded files, and back to the standby state ;

■ Video resolution quick select long press the video recording button for one second, four kinds of camera resolution logo displays on the screen, short press Up or Down keys to select, and then short press the video recording button to confirm the selection, the video quality level defaults to middle class;

■ Automatic night vision function in low-light or no light environments, the machine will automatically turn on infrared LED lights and infrared filter into the night vision shooting mode;

■ Photo short press the photo button to take pictures, save automatically and back to standby state; long press photo button for one second, kinds of photo resolution logo displays on the screen, short press UP or DOWN to select, click photo button to confirm then taking photos according to the resolution that has been selected.

■ Capture function in the recording process, short press the photo button, capture will be done and picture automatically saved. This will not interrupt the process of the video recording, capture photo resolution equals to the resolution current video;

■ Digital zoom in the standby state, short press ■ to realize photos or videos digital zoom, in total four levels, every time short press to next level zoom. In video process, Digital zoom function is unavailable.

■ Voice recording short press the voice record button to start recording, short press once more to save the current recording and back to standby state;

Note: In the recording process, in order to ensure the best results, do not block or cover the front panel microphone hole!

In the recording process, you can not stop it in 5 seconds!

■ **How to use external camera:** Connect external camera to AV IN port, long press "Voice recording" for 5 seconds, and the screen shows "change sensor". Long press it for 5 seconds to return machine sensor.

■ File browsing and playback

In standby state, long press Play/Pause/play back button to enter the file list status

The previous / next file short press up or down

Playback: Short press Play/Pause/play back button to play the selected file. In the process of playback, long press ▲ or ▼ to adjust the speed of fast forward or backward. Once long press can adjust speed(fast forward or backward) to 2/4/6/8/10 times

Exit Play: In playing state, short press the power on button to exit, short press the button once more to enter file browsing state

The play volume increase / decrease short press up button to increase the volume, short press down button to decrease the volume

Pause / Resume short press Play/Pause/play back button in playing state, pause; short press again, continue file playback

■ **GPS on / off** standby / video status, short press Play/Pause/play back button to open

the GPS function, GPS logo shown on the top left of the screen, current location longitude and latitude superimposed on the current video file, shown on the bottom left of the screen; short press Play/Pause/play back button again to turn off GPS;

■ **Lights on/off:** in standby/video status, short press ▲ to turn on lights; short press again to turn off the lights.

■ **Laser positioning LED on/off:** In video status, short press ▼ to turn it on; short press again to turn it off.

Attention: Please do not look directly at the laser positioning LED to prevent injury.

■ **Learning Library of Laws and Regulations**

1. Long press ► to enter the file browsing mode in the standby state, then long press ▲ twice to enter the parent directory, select "laws and regulations" directory;
2. Short press ► once to enter "laws and regulations" file browsing mode;
3. View mode of operation is same as "file browsing and playback";

■ **Document Management**

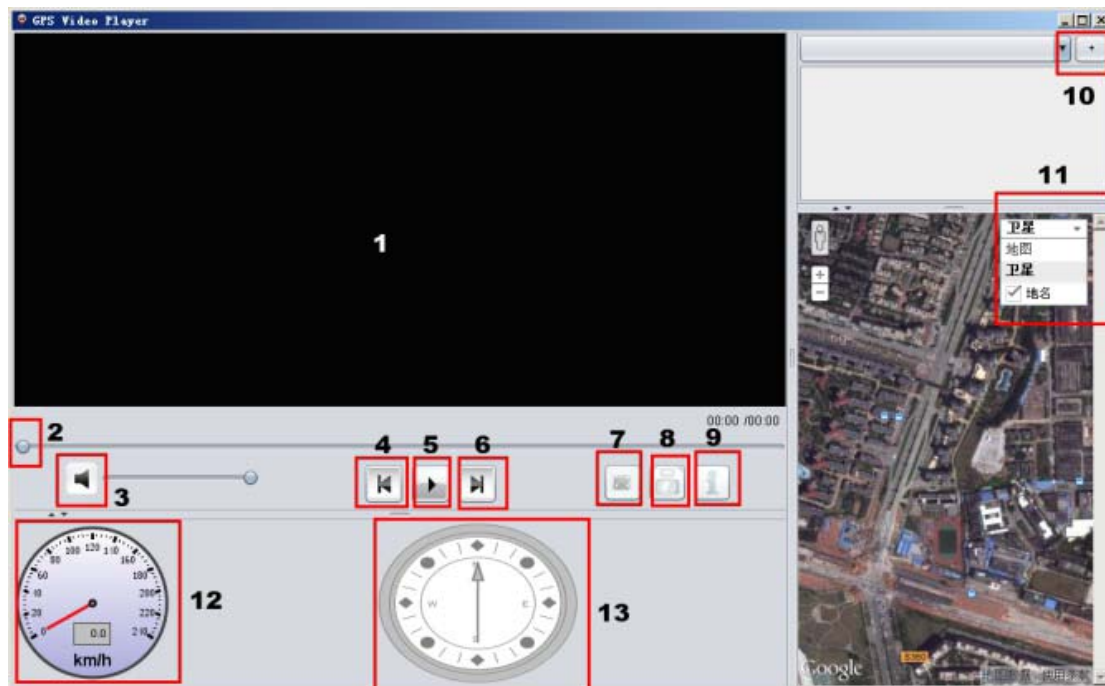
1. Connect machine and PC with USB cable in the state of power-on
2. When screen turns blue, open "my computer" and run on "csetup.ext, and type correct password.. A general police officer's authority (can only upload files and view the operation). Its initial password is 123. An administrator's authority (can set or format the machine). Its initial password is 321.
3. Password input method: When Press ► once, the current number will be added once. When pressing ▲ or ▼, it means to move a character to left or right. After entering 6 passwords, press ■, then it will show successful password authentication. The Screen turns blue and shows " Mobile HDD". Now relevant letter appears, open to read the video files which saved in the machine or operation log.

Attention: If need remove any files of the machine, please be sure e remove individual file or remote the entire video folder DIMC. Please do not remote multiple files to prevent accidents.

4. If the password is not correct, please check the password and repeat the operation.

■ **The Use of GPS Tracking Player Software**

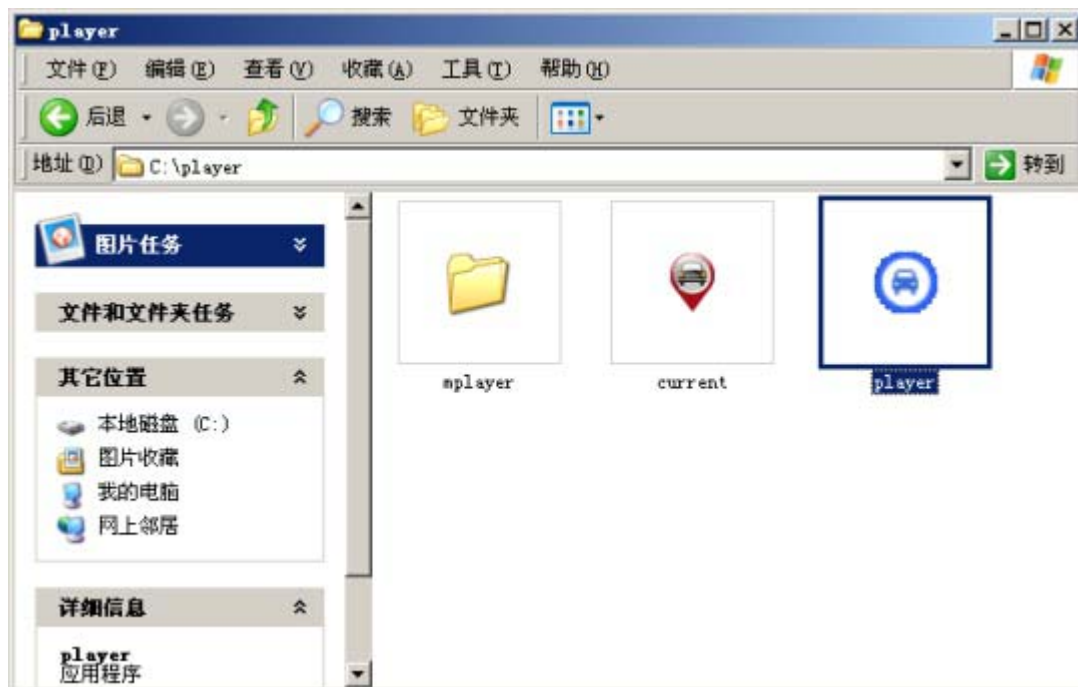
1. Software Interface



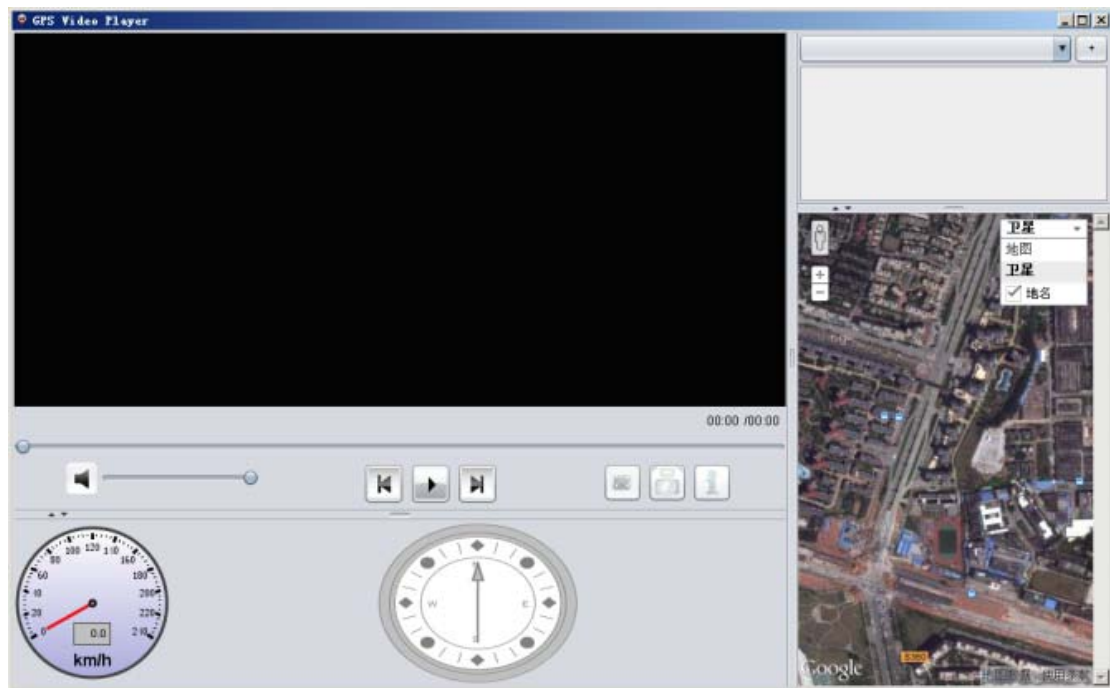
1)Video window; 2)Seekbar findViewById; 3)voice; 4)Last file; 5)Play/Stop; 6)Next file;
7)Full Screen; 8)Screenshot; 9)Info of software; 10)File list; 11)Window of Google map

2. How To Use Software(need internet to use Google map)

1) Open and Run "Player" program



2) Below software interface appears:



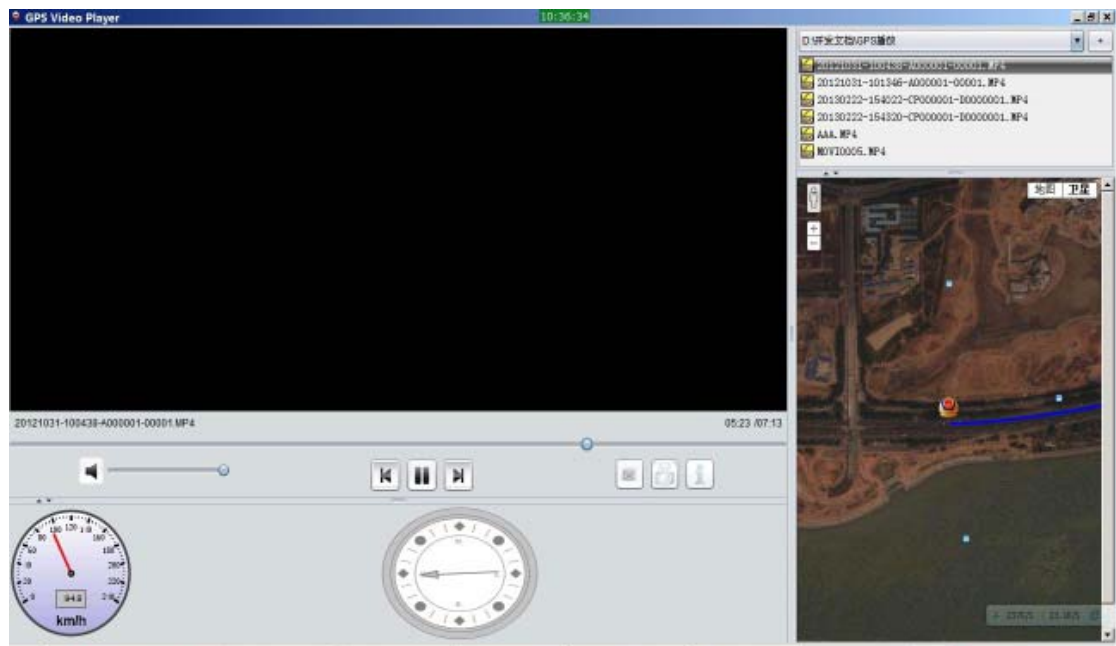
3) Click upper right corner +, choose the path of file which need to play.



4) Choose the relevant file



5) Choose the file which need to play and play it



■ Setting Interface of The Machine Internal Software (X:\SETUP\CSETUP)

Attention: Above software interface just for this batch manual. Please subject to the software interface when using.

■ **Parameter settings:** After logining the machine, administrator can all set parameters of the machine through built-in setup program according the requirements.

■ **Intercom Function:** Use intercom cable to connect the intercom, press PTT button to turn on / off the intercom function.

■ Working Indicator Status Description

- 1, The indicator light turns green when machine is in working state, and it keeps on green after power-on.
- 2, Video indicator light is red, and it keeps on red when working. Voice recording indicator light is yellow, and it keeps on yellow when working.
- 3, Blue light will be flashing when low-battery.
- 4, Charging indicator light turns blue when charging, and it turns off when it is fully charged.

■ Waring Tones Description

- 1, Single-tone "D" when turning on.
- 2, Long-tone "D" for 2 seconds when memory card is full
- 3, One "click" shutter sound when taking photo
- 4, Single-tone "D" when starting video; dual-tones"D" when stopping video.
- 5, When low battery, the machine will save the file automatically and power off after "D" warning tone continues for 5 minutes. Press ON/OFF to power off when warning tone continues.

■ **HDMI Output Function:** in the standby state, connect TV (or projector) with HDMI cable to output the images to TV(or projector).

■ **The Use of Remote Control (optional):** Long press ■ to start the communication between remote control and machine. ☉ shows on the middle left of the screen. Long press ■ again, and close the communication between remote control and machine. At the same time ☉ disappears. For more details, please refer to the sketch map of Remote Control part.

When connecting TV(or projector) with HDMI cable, you can use remote control to operate as below:

Upper Left Button: Up / volume cycle +

Lower Left Button: Down / play next file

Upper Right Button: Play / pause / confirm, turn to file browser in preview

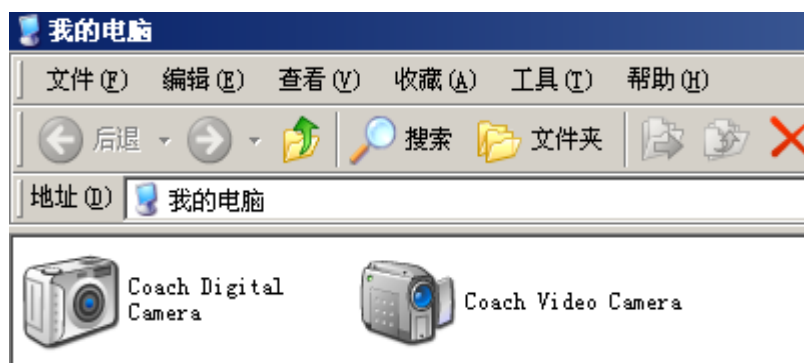
Lower Right Button: Exit

■ PC Camera Function

1. Install driver CoachUSBDriver4.82



2. Open the machine, and long press “Video Recording” for 5 seconds. After “Upgrade” shows, connect it to PC with USB cable. Then the screen shows “Firmware upgrade PC Camera” in yellow text blue background. After it turns to yellow text black background, open “my computer”

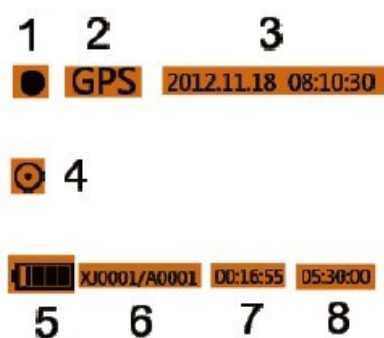


3. Choose “Coach Video Camera”, and double-click it. You can use PC camera function when below appears:



Function description of Screen Icon

1. Video working status
2. GPS starts
3. Machine's current time
4. Remote control communication starts
5. Machine battery level
6. User's ID / machine's ID
7. Recording time
8. Available remaining time



Technical Parameters:

Image sensor	500M pixels, CMOS sensor
View angle	130°
GPS	Built-in GPS receiver module
LCD screen	Highlight 2.0 " LTPS TFT LCD HD
Video resolution	1920×1080 (30fps) 1280×720 (30-60fps) 720×480 (30-60fps)
File encode format	H.264
Video formats	AVI
Photo resolution	1200M
Photo format	JPEG
Audio file format	WAV
IR night view mode	6 ϕ 5 IR led, Auto IR Cut, night shot>3m
Input/output port	HDMI, PTT, USB2.0(data transfer/DC IN)
Built-in battery	Lithium battery, 2800mAh
Continuous Video recording time	≥10 hours(No IR LED, resolution of 720 x 480 25fp/s)

Standby time	≥18hours
Storage medium	16GB, support max. 32GB
Operation humidity	10%~80%
Operation temperature	—10℃~70℃
Dimension (l x w x h)	102.5mm×58mm×28mm
Operating system	Windows XP/2003/Vista/Win7;

Packing list

Attention:

Please check whether below accessories are included before using.

Standard accessories:

Back clip



D/C Charger



Car charger



USB cable



Optional accessories:

Remote control



External camera



HDMI cable



Car bracket



Intercom connecting cable



